

# Professional Compact Thermal Cameras

FOTRIC C series

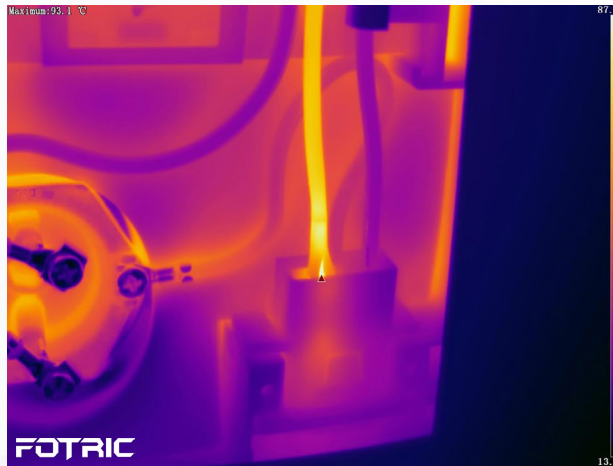
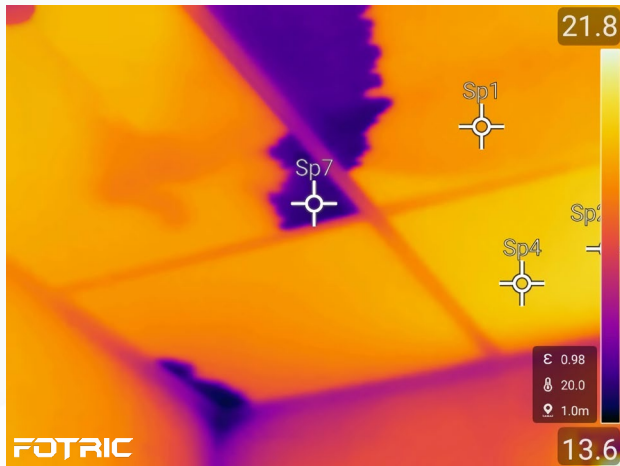


Compact  
High Performance  
Alternative

Flexible | Intuitive | Reliable

# Ready-to-go All-purpose

- Detect Mechanical, Electrical and Building hidden thermal abnormalities with enhanced images.
- Measure temperatures from -20 to 650° C with automatic range adjustment.
- Reveal low visibility details with LED flash lamp and Laser pointer.
- Aim and shoot large scenes with wide-angle lens.



# Easy Inspections

## Always in Focus

Focus-free thermal and manual focus design, suitable working distance as close as 0.1m.

## Easy Operation

Highly-responsive 3.5" touch-screen and fast user interface for a smoother experience.

## Hands-free Annotations

- Record voice-notes and listen to alarms via a Bluetooth headset.
- Tag images with equipment name using QR-Code scanner.

## Compact and Light

Its weight and size fit as one more tool in the box or overall pocket.

## Easy Sharing

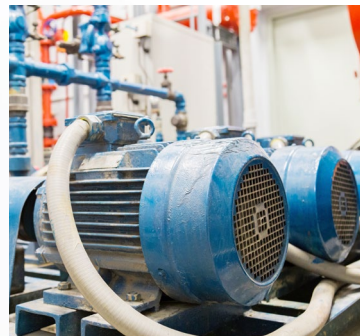
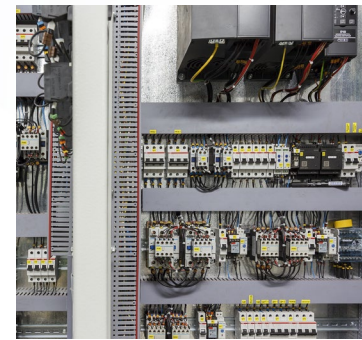
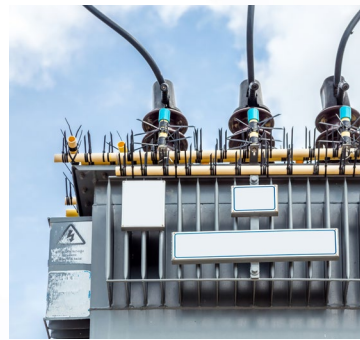
- Transfer images in seconds via Wi-Fi or Memory Card (64GB).
- View thermal photos and videos in almost any device (JPEG & MPEG4 formats).
- One-click automatic reports via FOTRIC AnalyzIR software.

# Reliable from the Inside-out

- Dust and water resistant (IP54), 2 meters drop designed. Highly durable against common field environments.
- Lifetime Free camera software upgrades to meet global users's needs.



- FOTRIC is committed to deliver state-of-the-art products with world-class components and unique software.



# Specifications

Model	C5	C2
<b>Thermal Imaging Parameters</b>		
Infrared Resolution	384 x 288	160*120
Super Resolution	768 x 576	320*240
Thermal Sensitivity (NETD)	< 40mk@30°C (86 °F )	< 50mk@30°C (86 °F )
Spectral Range	8-14μm	
Image Frame Rate	30Hz	
IR Detector Type	Uncooled infrared focal plane detector	
Detector Pitch	17μm	
Field of View (FOV)	49° x 37°	46° x 35°
Spatial Resolution (IFOV)	2.23 mrad	5.02mrad
Focal Length	8 mm	3mm
Minimum Imaging Distance	0.1 m	0.1m
Focus Mode	Manual; Focus-free	Manual focus
Digital Zoom	1~8x continuous zoom	1~6x continuous zoom
<b>Unique Features</b>		
IRExplorer™	Support, cross-platform remote control and data transfer	
T-DEF®	Support, thermal and visible light image blend, transparency 0% ~100%	
IREdge	Support, contour detail enhancement	
T-TWB®	Support, temperature visual representation normalization	
<b>Temperature Analysis</b>		
Complete Temperature Range	-20°C ~650°C (-4 °F to 1202 °F)	-20°C ~550°C (-4 °F to 1022 °F)
Intelligent Range	Support	
ROI Spot	10 spot markers	6 spot markers
ROI Area	8 (rectangle or circle)	6 (rectangle or circle)
ROI Line	2 measurement lines	1 measurement lines
Accuracy	±2°C (3.6 °F ) or ± 2 %, whichever is greater (ambient temp at 77 °F ).	
Measurement Parameters	Emissivity, Reflected temperaure, Ambient temperature, Humidity, Distance and IR window compensation.	

# Specifications

Temperature Rise Feature	Support
ROI Emissivity	Support
Area Alarms	Support
Color Alarms (temperature alarms)	High temperature, low temperature, and interval isotherms
PC Software	AnalyzIR®
<b>Image Display</b>	
Display Screen	3.5 inch touch screen (640 x 480)
Image Mode	Thermal image, Digital Camera, Picture in Picture and T-DEF®
Image Overlay	Display global max, min, avg and measurement parameters.
High/Low Temperature Tracking	Yes, for both global and ROI
T-TWB®	Temperature visual representation normalization option
IREdge	Contour detail enhancement
Palettes	8; Grey, Iron, Rainbow, Grey-red, Rain, GlowBow, Medical, Prism
Inverted Palettes	Support (8 inverted palettes)
Temp Span Mode	Auto (Minimum Temp Span 3°C /5.4 °F ), Manual (Minimum Temp Span 2°C /3.6 °F ), Touch-screen(Minimum Temp Span 2°C /3.6 °F )
<b>Capture Feature</b>	
Digital Camera	8MP industrial grade camera
Storage Card	TF card, 64GB
Capture Mode	Single frame / Video recording / Time-lapse
Video Recording	Radiometric thermal video(IRS.) and MP4 video recording (non-radiometric).
File Format	Radiometric thermal photo (JPEG.), thermal video (IRS.) and non-radiometric digital camera photo, MP4 video
Gallery	Support (Image preview & analyze and video preview & analyze)
On-device Analysis	Support (Radiometric Image and Video Data)
Freeze Interface	Support single frame thermal image and radiometric video edition
QR Code Functionality	Support QR code and Barcode scanning
Annotation	Support Voice\Text\Tag\Favorite

# Specifications

## Data Connection

Wi-Fi Connection	2.4GHz and 5 GHz frequency, support 802.11a/b/g/n/ac
Bluetooth Connection	BT4.2 LE, connectable to bluetooth headphone
USB Interface	USB Type-C; USB 3.0 / 2.0 compliant, Support USB OTG
HDMI Interface	Micro HDMI type, Comply with HDMI 1.4 specification, support 1080p image video transmission at 60Hz frame rate
FTP Data Transfer	Accessible through WiFi or Hotspot, rapid data transfer
Remote Display	Support Radiometric IR Video Streaming over type-C 3.0 interface; non-radiometric IR video streaming over HDMI interface and IRExplorer™
Remote Control	Support (through AnalyzIR® and IRExplorer™)

## Battery

Battery Type	Rechargeable Li-ion, 3.6V, 5000mAh
Battery Operating Time	≥ 4 hours per battery
Batter Charging Time	2.5 hours to 90% full charge
Battery Charging System	Support battery dock adaptor and Type-C interface (compatible with cell phone charger).
Energy Management	User-selectable screen-off modes

## Auxiliary Features

Software Upgrade	Support on OTA upgrade and local upgrade through USB
AI Programmable Key	Support, for quick start
Laser	Level 2; Wavelength: 635nm; Power: <1mW;
GPS	Support
LED	Support

## Physical Parameters

Operation Temperature	-20°C (-4 °F ) to 50°C (122 °F )
Storage Temperature	-40°C (-40 °F ) to 70°C (158 °F ) (without battery)
Relative Humidity (Operation and Storage)	<95%RH
Ergonomic Design	Yes
Dimensions	243mm*95mm*142mm

# Specifications

Weight	730g
Tripod Interface	UNC 1/4 -20 threaded hole for tripod
<b>Certification and Reliability</b>	
Safety	EN 61010-1
Electromagnetic Compatibility	EN 61326-1
Vibration	2g(IEC 60068-2-6)
Shock	25g(IEC 60068-2-27)
Drop	Engineered to withstand 2 meters (6.5 feet) drop with standard lens
Enclosure Rating	IP54(IEC 60529)
Warranty	2 years (standard),10 years for the infrared detector
Recommended Calibration Cycle	2 years
Languages	English, Traditional Chinese, Spanish, Korean, German, Portuguese, Italian, French, Thai.
<b>Standard Configuration</b>	
Packaging	Infrared thermal imager, 2 batteries, battery charger, power adapter, USB type-C to USB interface cable,micro HDMI to HDMI interface cable, TF card,information bag (packing list,user manual, calibration certificate, warranty card), portable soft bag, portable hard case



# Innovation Excellence Integrity

Equipment described herein may require EU, US and UNSC authorization for export purposes.

Imagery for illustration purposes only.

Specifications are subject to change without notice.

FOTRIC INC. All Rights reserved.

Update 10/2024

[info@fotric.com](mailto:info@fotric.com)

[www.fotric.com](http://www.fotric.com)