

## Stainless steel weighing bridge with screwed-on weighing plate (IP67) and stainless steel display device (IP68), verification optional

### Features

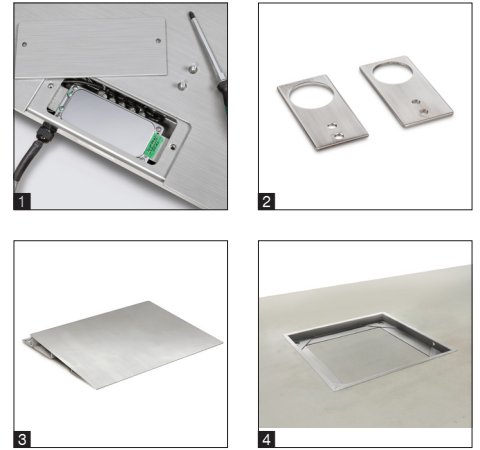
- Tough industry standard suitable for use in harsh industrial applications
- 1** Weighing plate screwed on from the top with stainless steel screws, so it's easy to remove, hygienic and easy to clean
- Weighing bridge: stainless steel, extremely resistant to bending due to material thickness, 4 hermetically welded stainless steel load cells, IP68 dust and spray protection
- Easy levelling of the weighing bridge as well as access to the junction box from above
- Display device: stainless steel, protection against dust and water splashes IP68, for details see KERN XXC-TM
- IoT line: networkable balances with user-friendly concept of operation
- The exchange of data and control commands is optional using up to four interfaces to suit

individual requirements: two wired connections and two wireless connections, for details see KERN XXC-TM

- Available as an option with alibi memory for paperless archiving of weighing results. This also means the results of weighings with mandatory verification can be electronically evaluated and processed further
- Wall mount for display device, standard

### Technical data

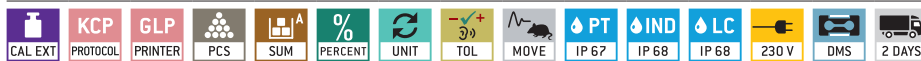
- Large backlit LCD display, digit height 48 mm
- Weighing platform dimensions W×D×H, stainless steel
  - A** 1000×1000×85 mm
  - B** 1500×1250×85 mm
- Dimensions of display device W×D×H 232×150×80 mm
- Permissible ambient temperature -10 °C/40 °C



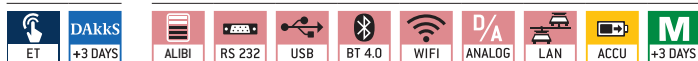
### Accessories

- Stand to elevate display device, height of stand approx. 1040 mm, KERN BFS-A07
- 2** Pair of base plates to fix the weighing bridge to the floor, KERN BFN-A03
- 3** Ascending ramp, Stainless steel, for models with weighing plate size
  - A** 1000×740×90 mm, KERN BFN-A05
  - B** 1250×760×85 mm, KERN BFN-A01
- 4** Stable pit frame, Stainless steel, for models with weighing plate size
  - A** 1090×1090×90 mm, KERN BFN-A06
  - B** 1590×1340×90 mm, KERN BFN-A02
- Internal rechargeable battery pack, operating time up to 22 h without backlight, charging time approx. 8 h, must be ordered at purchase, KERN YKR-01
- Memory module with real time clock (alibi memory), KERN YMM-06
- Internal data interface RS-232, interface cable included, KERN KUM-01
- Internal data interface USB, interface cable included, KERN KUM-03
- Internal data interface Ethernet, interface cable included, KERN KUM-04
- Internal data interface WIFI, KERN KUM-05
- Internal data interface Bluetooth, KERN KUM-06
- Analogue module, KERN KUM-08
- Further details, plenty of further accessories and suitable printers see *Accessories*

### STANDARD



### OPTION



! Shipment via freight forwarder. Please ask for dimensions, gross weight, shipping costs

Model	Weighing capacity [Max] kg	Readability = Verification value [d] = [e] kg	Minimal load [Min] kg	Cable length of display device approx. m	Net weight approx. kg	Weighing plate	Options	
							Verification	DAkkS Calibr. Certificate
KERN							M III KERN	DAkkS KERN
<b>BXC 600K-1SM</b>	600	0,2	4	5	85	<b>A</b>	965-230	963-130
<b>BXC 1.5T-4SM</b>	1500	0,5	10	5	85	<b>A</b>	965-230	963-130
<b>BXC 1.5T-4M</b>	1500	0,5	10	5	120	<b>B</b>	965-230	963-130
<b>BXC 3T-3M</b>	3000	1	20	5	150	<b>B</b>	965-232	963-132

Note: For devices that require verification (conformity assessment according to NAWI 2014/31/EU), please include the verification when placing your order. The initial verification is not possible after delivery. Please inform the full address of the location of use for the initial verification.

Note: For verified scales the weighing bridge must be fixed to the floor. Optionally, with an access ramp, a footplate pair or a pit frame