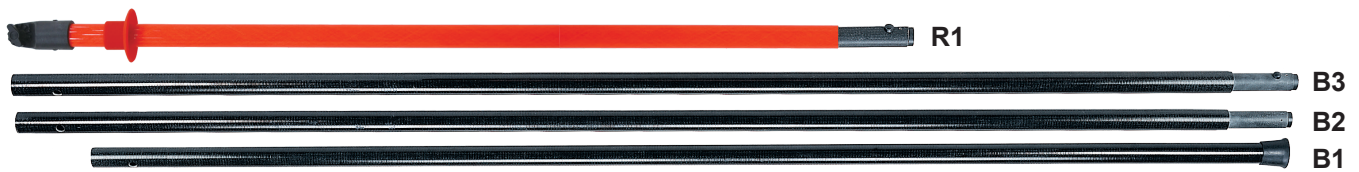


Hot Stick



HS-120

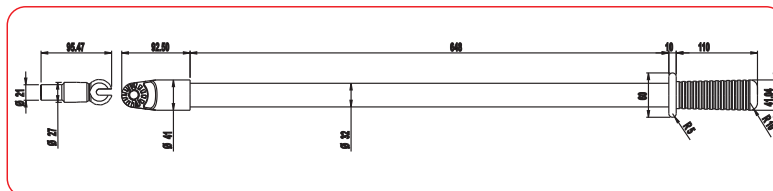
- Used for the extraction of fuses, isolators & fuse switch disconnections
- Can be attached to the 275 HP Proximity Detectors and contact Capacitive Detectors 21× HVD
- Universal "sunrise" head attachment to fit special tool fittings
- Head Section rated at 100kV per 300mm(5 min)
- Comes complete with sunrise fitting and fuse extractor
- Set includes three 1.8m sticks and one 1.2m head section
- The 1.2m head section is complete with universal sunrise fitting
- Carry bag included
- Meets IEC 60855



HOK-HS166
Disconnect hook
(Optional)



ADP-HS120
Fuse extractor head



The Hot Sticks can be attached to the Proximity Detectors 275 HP and 277 HP.

⚠ CAUTION

Highly insulated gloves are essential when detecting high voltages with the HS-800 and non-contact high voltage detectors.



HS-800